

SIBA

Yükleme Ve Temizlik Makinaları Ürün Kataloğu 2025



FE4P20Q



Wheel Electric Forklift



AC MAINTENANCE-FREE DRIVE MOTOR

Adopt maintenance-free and powerful AC drive motor. Compared with traditional DC motors, Noblift's AC motors do not need to replace Carbon brushes. Equipped With speed sensor and temperature sensor, greatly improving the AC motor's reliability.

SIDE- EXTRACTION BATTERY

Battery can be replaced easily by using another forklift, meeting continuous application if necessary.

LOW CENTER OF GRAVITY

Transmission system uses a horizontal fan-shaped drive Axle arranged in parallel and has a large transmission ratio. The battery is installed at the bottom of the frame, vehicle height is 2080mm with easy entrance to limited doors and high stability.

LOW NOISE, LOW VIBRATION DESIGN

The hydraulic system uses a low-noise gear pump and full hydraulic power steering. Low noise and comfortable operation.

Steering axle vibration absorb design: adopt flexible connection to protect the vehicle system and prolong the service life of the forklift

SAFER AND EASIER ELECTROMAGNETIC BRAK

Adopt car control mode and electromagnetic braking to make the driver's operation more comfortable.



The design of the Q series is based on the original Noblift E series and N series with combination of the advantages to meet the light and medium applications with great comfortness and efficiency. The truck is optional to have either Lead-acid battery or Li-ion battery. With lowered center of gravity and overhead guard, the truck is ideal to be used in limited spaces such as entering elevator.



Transmission system uses a horizontal fan-shaped drive axle arranged in parallel with a large transmission ratio. The battery is installed at the bottom of the frame. Traveling motor adopts AC maintenance-free motor.

Front multi-way valve operating device makes operation more comfortable.



Steering axle vibration absorb design: adopt flexible connection to protect the vehicle system and prolong the service life of the forklift.



Adopt car control mode: Suspended driving brake system, stepless speed change. Finding driving pleasure at work.



Multi-function display screen with fault alarm, low battery reminder. High, medium and low speed modes.

Electromagnetic brake button cut off power at one time, making brake safer and easier.



A



B



C



D

A The vehicle hood and the left and right small side-panels are formed by steel plates at one time, which is simple and decent and more convenient to operate.

B Wide-view mast, intelligent buffering when descending to the ground, effectively protecting the ground and cargo from damage.

C The forklift is equipped with standard LED lamps: headlamps, front turn lamps, rear combination lamps, warning lamps. Bright light with low power consumption allows you to operate freely at night.

D Compared with other N series 4-wheel Electric counter balance forklift, this model is smaller in size and more flexible, which is more suitable for working in narrow places

Mast Table FE4P16-20Q

Designation	Lift height	Free Lift	Closed mast height	Extended mast height	Tilt forward/ backward	Capacity table(kg) C=500mm without sideshift, single solid tyres	
	h3 (mm)	h2 (mm)	h1 (mm)	h4 (mm)	$\alpha/\beta(^{\circ})$	FE4P16Q	FE4P20Q
Two-stage ZT	2500	110	1803	3482	6/10	1600	2000
	2700	110	1903	3682	6/10	1600	2000
	3000	110	2053	3982	6/10	1600	2000
	3300	110	2203	4282	6/10	1600	2000
	3500	110	2303	4482	6/10	1600	2000
	3700	110	2403	4682	6/10	1600	1900
	4000	110	2603	4982	6/6	1500	1800
	4300	110	2753	5282	6/6	1400	1600
	4500	110	2853	5482	6/6	1350	1500
	5000	110	3128	5982	6/6	900	1100
Two-stage ZZ	2500	853	1803	3482	6/10	1600	2000
	2700	953	1903	3682	6/10	1600	2000
	3000	1103	2053	3982	6/10	1600	2000
	3300	1253	2203	4282	6/10	1600	2000
	3500	1353	2303	4482	6/10	1600	2000
	3700	1453	2403	4682	6/10	1600	1900
	4000	1653	2603	4982	6/6	1500	1800
	Three-stage DZ	4000	1029	1978	4981	6/6	1500
4300		1153	2103	5330	6/6	1400	1600
4500		1203	2153	5480	6/6	1300	1500
4800		1303	2253	5780	6/6	1000	1200
5000		1403	2353	5980	6/6	900	1100



Fast replacement of the battery can meet continuous operation. The fully open hood design makes daily maintenance very convenient.

Lead-acid and lithium batteries are perfectly interchangeable. Don't worry about which battery to choose now.



FE4P16-20Q Battery Balance Weight Type Forklift
Identification

1.1	Manufacture(abbreviation)		Noblelift	
1.2	Manufacturer's type designation		FE4P16Q	FE4P20Q
1.3	Drive electric(battery or mains),diesel,petrol gas,manual)		electric	
1.4	Type of operation(hand,pedestrian,standing,seated,order-picker)		seated	
1.5	Load capacity/rated load	Q(kg)	1600	2000
1.6	Load centre distance	C(mm)	500	
1.8	Load distance,centre of drive axle to fork	x(mm)	381	386

Weights

2.1	Service weight incl. battery	kg	2940	3180
-----	------------------------------	----	------	------

Wheels, Chassis

3.1	Type solid rubber,superclastic,pneumatic,polyurethane		solid rubber/pneumatic	
3.2	Tyres size,front		18X7-8	
3.3	Tyres size,rear		5,00-8-10PR	
3.5	Wheels,number front/rear(*=driven wheels)		2x/2	
3.6	Track width front	b10(mm)	980	
3.7	Track width,rear	b11(mm)	920	

Basic Dimensions

4.1	Mast/lift carriage tilt forward/backward	$\alpha/\beta(^{\circ})$	6/10	
4.2	lowered mast height	h1(mm)	1985	
4.3	Free lift	h2(mm)	130	
4.4	Lift height	h3(mm)	3000	
4.5	Extended mast height	h4(mm)	3990	
4.7	Overhead load guardheight	h6(mm)	2075	
4.8	Seat height/standing height	h7(mm)	1065	
4.12	Coupling height	h10(mm)	530	
4.19	Overall length	l1(mm)	3050	3200
4.20	Length to face of forks	l2(mm)	2130	
4.21	Overall width	b1(mm)	1150	
4.22	Fork dimensions	s/e/l(mm)	35/100/920	40/120/1070
4.24	Fork carriage width	b3(mm)	1040	
4.31	Ground clearance,laden,under mast	m1(mm)	98	
4.32	Ground clearance,centre of wheelbase	m2(mm)	100	
4.33	Aisle width for pallets 1000x1200 crossways	As1(mm)	3571	3576
4.34	Aisle width for pallets 800x1200 lengthways	As2(mm)	3771	3776
4.35	turning radius	Ws(mm)	1990	

Performance Data

5.1	Travel speed,laden/unladen	km/h	12/13	11/13
5.2	Lift speed,laden/unladen	m/s	0.27/0.35	0.25/0.35
5.3	lowering speed,laden/unladen	m/s	0.52/0.42	
5.7	Max Gradient performance,laden/unladen S2.5 min	%	12/15	
5.10	Service brake		electromagnetic brake	

E-Motor

6.1	Drive motor rating S2 60 min	kW	7	
6.2	Lift motor rating at S3 15%	kW	8.6	
6.3	Battery standard		DIN	
6.4	Battery voltage,nominal capacity K5	V/Ah	Pb-acid 48/360(48/400,48/460) Li 48/200(48/300,48/400)	Pb-acid 48/400(48/460) Li 48/200(48/300,48/400)

Other Details

8.1	Type of drive control		AC	
8.2	Operating pressure for attachments	Mpa	14.5	
8.3	Oil volume for attachments	l/min	30	
8.4	Sound level at driver's ear according to EN 12 053	dB(A)	72	

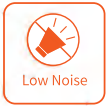
FE3R16NC

Three-wheel Rear Drive Forklift

 **Ready for Lithium power**

ADVANTAGES

- Smart & Compact Design with Great Mobility
- Maintenance-free AC Drive System
- Intelligent Computer Controller System
- On-board Self-Diagnostic Display
- Excellent Safety and Reliability
- Easy Service & Maintenance
- Standard Side Battery Extraction
- Great Comfort and Ergonomic Design
- Easy EPS Steering (for FE3R16N)

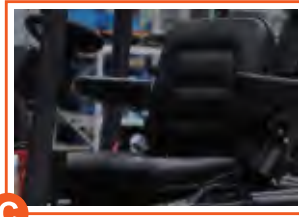




A



B



C



D



E



F



G



H

A Front LED Lights, Steering lights, Rear Combination Lights, Warning light standard, safe to work in dark environment such as containers or in the night.

B-C Small Diameter Steering Wheel with Spinner Knob, Adjustable Steering wheel position and seat to optimize the comfortness of the operator for long time operation.

D Small Diameter Solid Front Wheels for easy and smooth motion.

E-F Intelligent ZAPI or Curtis Self-diagnostic display for easy operation and maintenance, Standard Rear Wheel Position Sensor & Display with Speed Reduction at Turning.

G Optional different battery capacities for different operation needs, optional Aquamatic battery self-filling system for easy battery maintenance.

H Extremely compact design with small width and turning radius for easy operation in confined spaces.

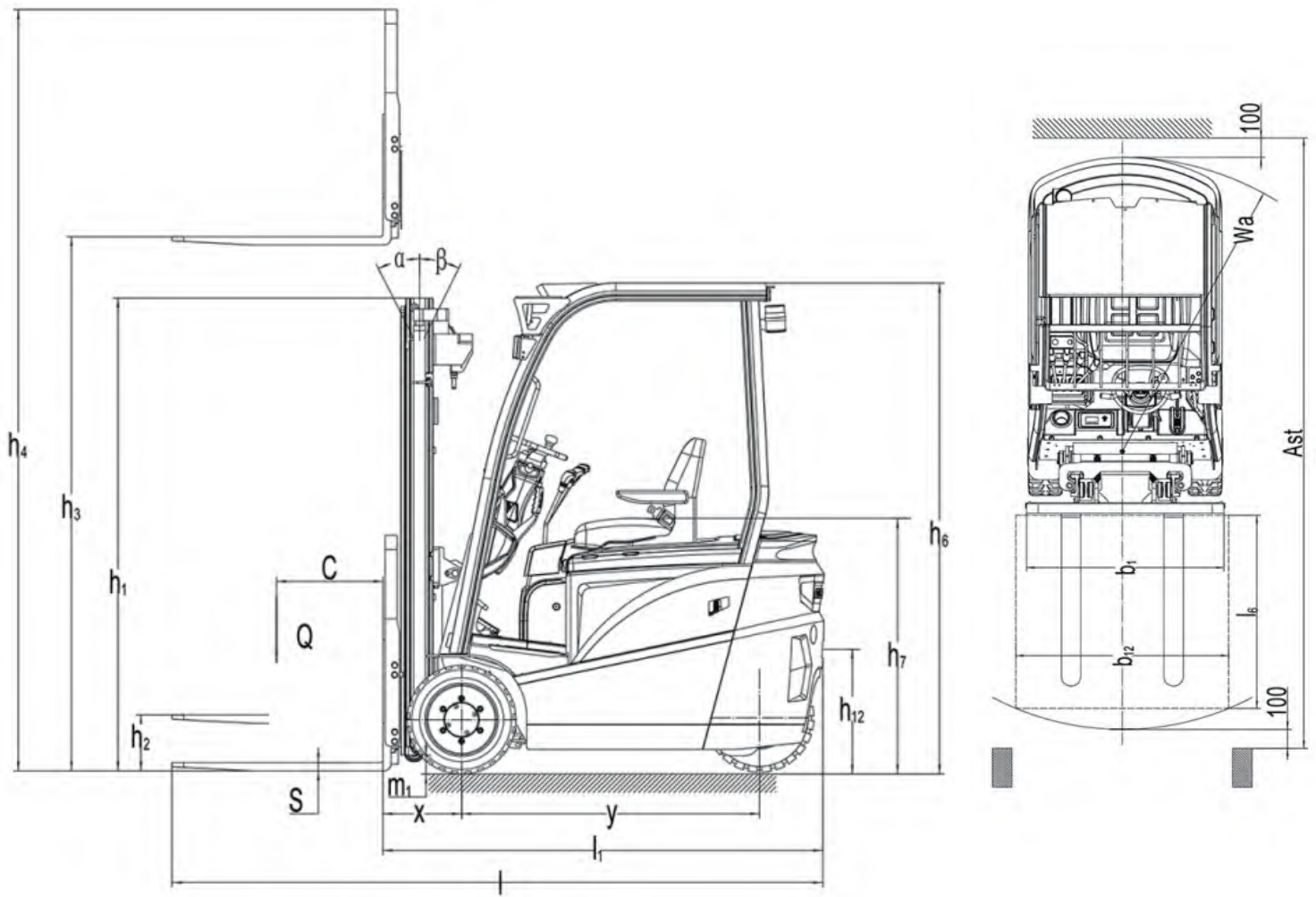


Battery compartment with fork pockets for 16N.



Vehicle width 1000mm, turning radius 1500mm, so that the vehicle has a good passability.





Mast Table FE3R16NC

Designation	Lift height	Free Lift	Closed mast height	Extended mast height	Tilt forward/ backward	Capacity table(kg) C=500mm without sideshift, single solid tyres FE3R16NC
	h_3 (mm)	h_2 (mm)	h_1 (mm)	h_4 (mm)	$\alpha/\beta(^{\circ})$	
Two-stage ZT	2500	105	1747	3480	4/4	1600
	2700	105	1847	3680	4/4	1600
	3000	105	1997	3980	4/4	1600
	3300	105	2147	4280	4/4	1600
	3500	105	2247	4480	4/4	1600
	3700	105	2347	4680	4/4	1500
	4000	105	2547	4980	4/4	1450
	4300	105	2697	5280	4/4	1350
	4500	105	2797	5480	4/4	1250
	5000	105	3072	5980	4/4	1150
Two-stage ZZ	2500	792	1747	3494	4/4	1600
	2700	892	1847	3694	4/4	1600
	3000	1042	1997	3994	4/4	1600
	3300	1192	2147	4294	4/4	1600
	3500	1292	2247	4494	4/4	1600
	3700	1392	2347	4694	4/4	1500
	4000	1592	2547	4994	4/4	1450
	4300	1742	2697	5294	4/4	1400
	4500	1842	2797	5494	4/4	1350
Three-stage DZ	4000	1386	1934	4974	4/4	1500
	4350	1510	2059	5322	4/4	1400
	4500	1560	2109	5472	4/4	1300
	4800	1660	2209	5772	4/4	1200
	5000	1760	2309	5972	4/4	1150
	5500	1910	2459	6472	4/4	1050
	6000	2110	2659	6979	4/4	950

Identification

1.2	Manufacturer's type designation		FE3R16NC
1.3	Drive:electric(battery or mains),diesel,petrol gas,manual)		electric
1.4	Type of operation(hand,pedestrian,standing,seated,order-picker)		seated
1.5	Load capacity/rated load	Q(kg)	1600
1.6	Load centre distance	c(mm)	500
1.8	Load distance,centre of drive axle to fork	x(mm)	340
1.9	wheelbase	y(mm)	1220

Weights

2.1	Service weight incl. battery	kg	3000
2.2	Axle loading ,laden front/rear	kg	4000/600
2.3	Axle loading,unladen front/rear	kg	1280/1720

Wheels, Chassis

3.1	Type:solid rubber,superelastic,pneumatic,polyurethane		solid rubber/solid rubber
3.2	Tyres size,front		18×7-8
3.3	Tyres size,rear		18×7-8
3.5	Wheels,number front/rear(×=driven wheels)		2/1×
3.6	Track width,front	b10(mm)	838
3.7	Track width,rear	b11(mm)	/

Basic Dimensions

4.1	Mast/fork carriage tilt forward/backward	$\alpha/\beta(^{\circ})$	4/4
4.2	lowered mast height	h1(mm)	1997
4.3	Free lift	h2(mm)	105
4.4	Lift height	h3(mm)	3000
4.5	Extended mast height	h4(mm)	3980
4.7	Overhead load guardheight	h6(mm)	2110
4.8	Seat height/standing height	h7(mm)	1050
4.12	Coupling height	h10(mm)	570
4.19	Overall length	l1(mm)	2750
4.20	Length to face of forks	l2(mm)	1830
4.21	Overall width	b1(mm)	1000
4.22	Fork dimensions	s/e/l(mm)	35/100/920
4.24	Fork carriage width	b3(mm)	980
4.31	Ground clearance ,laden,under mast	m1(mm)	92
4.32	Ground clearance,centre of wheelbase	m2(mm)	97
4.33	Aisle width for pallets 1000×1200 crossways	Ast(mm)	3169
4.34	Aisle width for pallets 800×1200 lengthways	Ast(mm)	3292
4.35	Turning radius	Wa(mm)	1500

Performance Data

5.1	Travel speed,laden/unladen	km/h	10/11
5.2	Lift speed,laden/unladen	m/s	0.30/0.40
5.3	lowering speed,laden/unladen	m/s	<0.6
5.5	Drawbar pull,laden/unladen S2 60 min	N	2800/8000
5.7	Max.Gradient performance,laden/unladen S2 5 min	%	10/13
5.10	Service brake		hydraulic

E-Motor

6.1	Drive motor rating S2 60 min	kW	5
6.2	Lift motor rating at S3 15%	kW	7
6.3	Battery standard		BS
6.4	Battery voltage,nominal capacity K5	V/Ah	48/350 48V/400(Optional)
6.4	Battery weight	kg	650
6.4	Battery dimensions l/w/h	mm	770×485×661

Other Details

8.1	Type of drive control		AC
8.2	Operating pressure for attachments	Mpa	16
8.3	Oil volume for attachments	l/min	30
8.4	Sound level at driver's ear according to EN 12 053	dB(A)	70

RT 16Li

Lithium battery reach truck

Lithium battery ride-on reach truck RT16Li with unique design. The cabin adopts four columns to penetrate the frame which is both beautiful and safe. Wide field of vision and driving space along with high elastic shock-absorbing seats provide a unique driving pleasure.

The German 6.4kW three-phase AC drive motor and the American controller are selected to ensure stronger vehicle power and smoother acceleration and deceleration. At the same time, it is equipped with EPS electronic power steering system for easy steering. The 180°/360° steering mode can be switched in real time with the German thumb switch, centralized type central console, fingertip operation, convenient and precise, ensuring high efficiency and driving comfort. Multi-function LCD instrument can display steering wheel position, battery power, power alarm, fault code, running time, driving speed and other information.

Suspension seat

The highly elastic shock-absorbing seat greatly reduces the transmission of vibration to the driver. At the same time, the combination of the automotive-grade bionic curved backrest can effectively reduce the driver's driving fatigue; the seat can be adjusted in multiple positions to meet the operation of different heights and body shapes. According to the needs of users, this car adopts lithium battery which can be charged quickly to meet the requirements of multi-shift working system. The steering wheel and center console can be adjusted freely in all directions to adapt to your best operating habits.



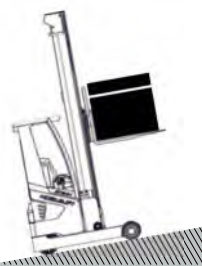
High performance guarantees high efficiency



The AC variable frequency speed control technology enables the driving, hoisting, and steering drive to realize stepless closed-loop speed control, which is accurate and reliable. Electro-hydraulic proportional control system, good fretting performance, more stable work and more precise control.



The driving speed
10.5km/h



The maximum grad-ability
with full load 10%



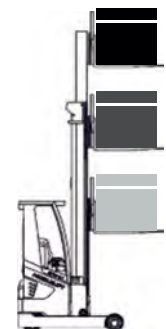
The turning radius only
1650mm



Unload lifting speed
0.5m/s



Full load lifting speed
0.4m/s



High capacity at high
position

Enjoy the driving experience



Multi-function LCD instrument can display steering wheel position, battery power, power alarm, fault code, running time, driving speed and other information.



The multi-function password lock can manually enter the password or swipe the card to start, which simplifies the authorization operation process and meets the requirements of multi-shift work.



Multifunctional armrest, German thumb switch, direction switch, EPS electronic power steering system, horn switch, emergency power off switch, etc., realize fingertip operation, convenient and accurate.



Spacious foot space allows any operator to find a comfortable position and ensures adequate comfort during operation throughout the shift.



Suspension seat The highly elastic shock-absorbing seat greatly reduces the transmission of vibration to the driver. At the same time, the combination of the automotive-grade bionic curved backrest can effectively reduce the driver's driving fatigue; the seat can be adjusted in multiple positions to meet the operation needs of different heights and figures.



Wide vision and driving space, ergonomic layout, embodies the humanized design.



Intelligent security protection

Height limit function:

When the fork is lifted to the maximum height, the lifting motor will automatically power off to ensure the safety of lifting.

Turning Speed Limit Control:

Prevent the forklift from overturning sideways when turning, and ensure the safety.

Motor temperature detection control:

Prevent the motor from being damaged due to overheating.

Motor current detection control:

Prevent the motor from being damaged due to excessive motor current.

Electromagnetic brake and hydraulic brake:

Combination of electromagnetic braking and hydraulic braking, short braking distance, no deviation, no impact, safe and reliable.

Parking electromagnetic brake:

It can realize one-button operation function either on the ramp and smooth ground.



High-precision forward sliding rails and excellent clearance compensation design make the mast more stable during reach application.



The chassis structure is strong, the distribution of the center of mass is reasonable, and the stability of the whole vehicle is excellent.



High-definition monitoring system, real-time monitoring of cargo stacking.



Standard high-performance lithium battery

Comparison of Lithium Battery & Lead Acid

Model	Lithium battery	Lead-acid batteries
Cycle life	2000~4000cycles	300~500cycles
Safe	Green and pollution-free	corrosion, pollution
Charging time	<2h	Above8h
Power conversion rate	Power conversion rate >97%	Power conversion rate ≤80%
Volume	Small size: 2/3 of the volume of lead-acid batteries	Big
Weight	Light weight: 1/3~1/4 of lead-acid batteries	heavy
Maintenance-free	Maintenance free	Distilled water or acid solution needs to be added regularly
Powerful	Stable voltage output, low self-weight, strong power	The voltage in the first half is high, the voltage in the second half is low, and the power is attenuated when the voltage is low
Memory effect	No memory effect, can be charged and discharged at any time	Has memory (affects battery life)

FAST CHARGING Charge your battery whenever and wherever you need

- The unique fast-charging feature of lithium battery makes it an ideal choice for multi-shift work. Comparing with traditional lead-acid battery, it is no longer needed to change batteries among shifts, or prepare stand-by battery and special charging area for Li-ion powered trucks. Fast charging allows charging at interval from operations which extends greatly the working time of truck. In addition, lithium battery has no memory of charging cycles which will not affect the life time at all. The lithium charger is no longer required to be placed in a specified area due to the environment-friendly feature of lithium battery, which brings much higher flexibility.

ENVIRONMENT-FRIENDLY High cost performance

- The Lithium battery is more environment-friendly. There is no acid evaporation, odor and pollution during the charging process. The operation of Li-ion powered trucks are relatively quiet and zero carbon dioxide emissions. Therefore, Li-ion powered trucks is an ideal plan for the industry that has environment concern, such as food processing, chemical and pharmaceutical industry.
- Each lithium truck requires only one battery attributing to its fast charging feature no matter how many work shifts. Life time of lithium battery is three times that of lead acid battery. The maintenance-free feature of lithium battery gives much higher cost performance than lead-acid battery.

SAFETY Efficient, Maintenance-free

- Lithium battery reduces 35% energy consumption, requires no specified charging area and exempts from cost for battery maintenance. It saves space, requires no device to be taken out of truck as well as additional ventilation and liquid filling device.
- The power lithium battery system is composed of high-safety high-density lithium iron phosphate battery, intelligent battery management system (BMS), thermal management system, and automotive-grade DC high-voltage control system. BMS enables the communication network between the power lithium battery and controller, the truck itself, the charger and the remote management platform, real-time detection of the status of the lithium battery, the operating state of the truck and the charging state, so as to maximize the safety and reliability of lithium batteries.



Lifting height up to 9500 mm



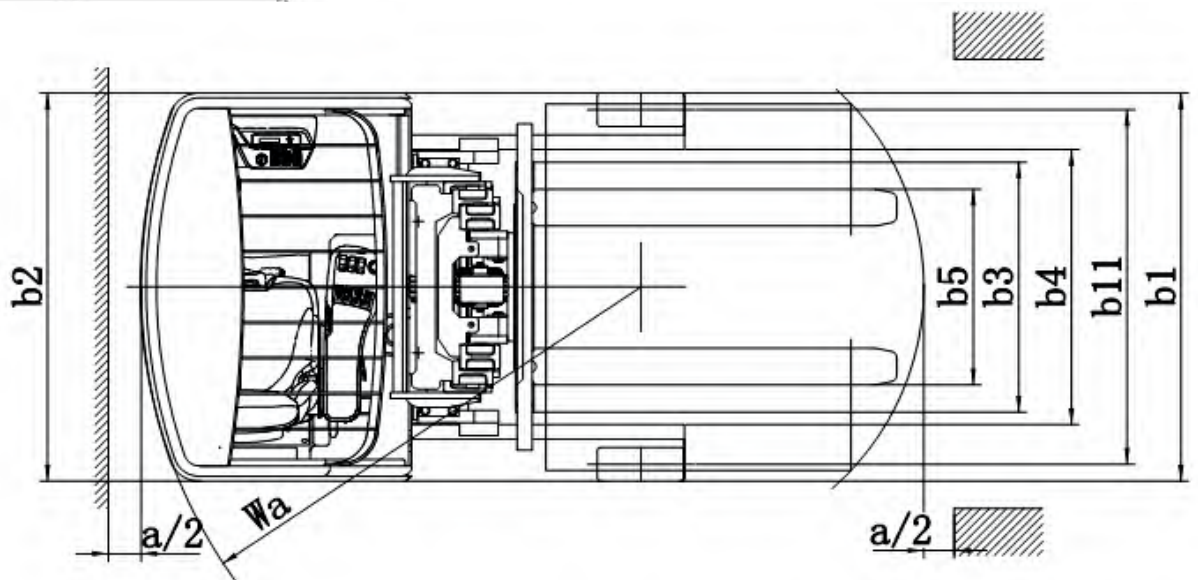
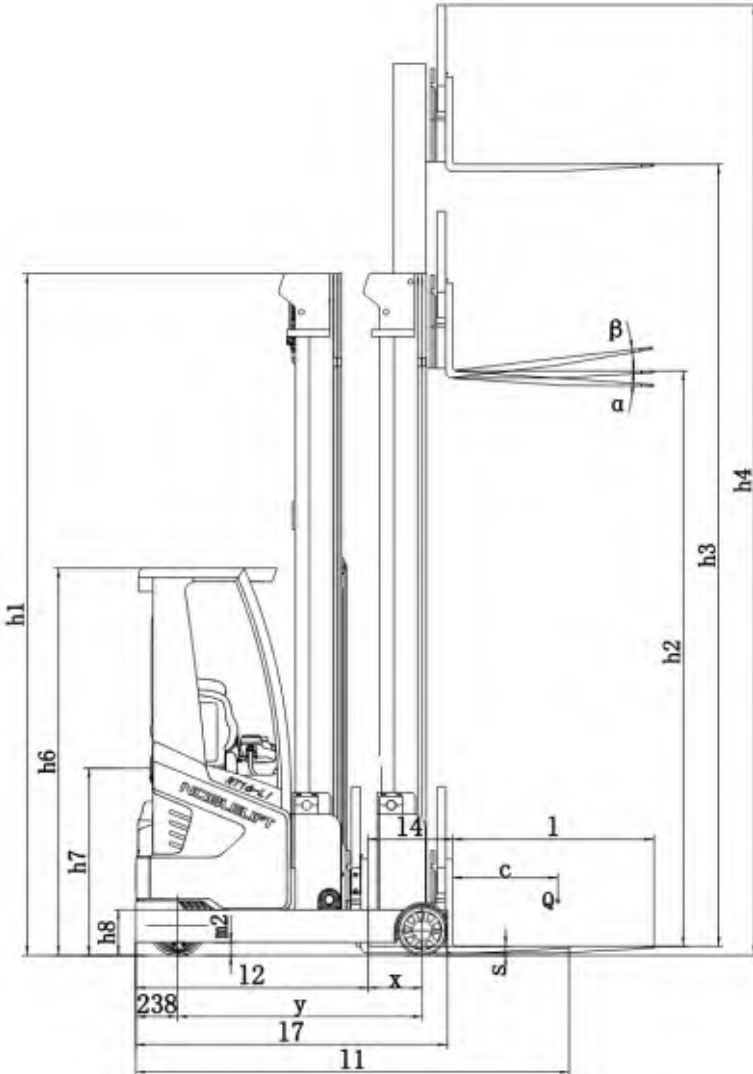
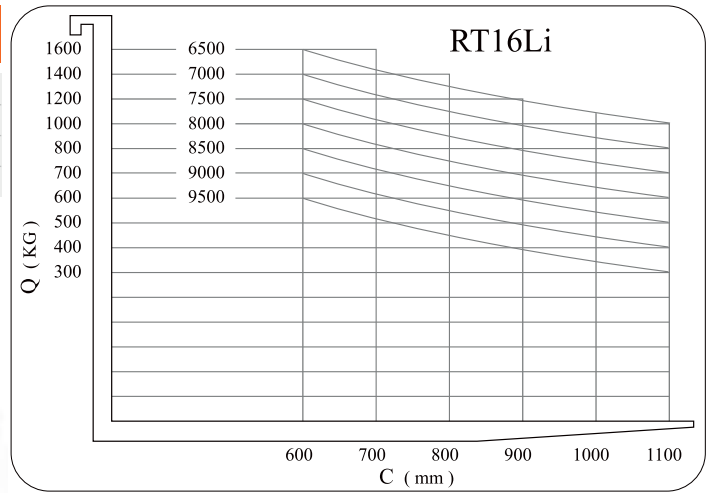
Identification			
1.2	Manufacturer's type designation		RT16Li
1.3	Drive:electric(battery or mains),diesel,petrol gas>manual)		electric
1.4	Type of operation(hand,pedestrian,standing,seated,order-picker)		seated
1.5	Load capacity/rated load	Q(kg)	1600
1.6	Load centre distance	c(mm)	600
1.8	Load distance,centre of drive axle to fork	x(mm)	310/174
1.9	wheelbase	y(mm)	1400
Weights			
2.1	Service weight incl. battery	kg	3730
2.3	Axle load, mast retracted without load, drive/support arm wheel	kg	2200/1530
2.4	Axle load, mast extended with load, drive/support arm wheel	kg	620/4710
2.5	Axle load, mast retracted with load, drive/support arm wheel	kg	1820/3510
Wheels, Chassis			
3.1	Type:solid rubber,superelastic,pneumatic,polyurethane		pu
3.2	Tyres size,front	Øxw (mm)	Ø343×140
3.3	Tyres size,rear	Øxw (mm)	Ø285×110
3.5	Wheels,number front/rear(×=driven wheels)		1×/2
3.7	Track width,rear	b11(mm)	1160
Basic Dimensions			
4.1	Mast/fork carriage tilt forward/backward	α/β(°)	4°/-2°
4.2	lowered mast height	h1(mm)	3900
4.3	Free lift	h2(mm)	3290
4.4	Lift height	h3(mm)	9500
4.5	Extended mast height	h4(mm)	10410
4.7	Overhead load guardheight	h6(mm)	2200
4.8	Seat height/standing height	h7(mm)	960
4.10	Height of support arms	h8(mm)	270
4.15	Height of lowered forks	h13(mm)	40
4.19	Overall length	l1(mm)	2475
4.20	Length to face of forks	l2(mm)	1325
4.21	Overall width	b1(mm)	1270
4.22	Fork dimensions	s/e/l(mm)	35/100/1150
4.23	Fork carriage ISO 2328, class/type A, B		2A
4.25	Width across forks	b5(mm)	200-740/200-818
4.26	Distance between support arms	b4(mm)	900
4.28	Reach distance	l4(mm)	485
4.31	Ground clearance ,laden,under mast	m1(mm)	90
4.32	Ground clearance,centre of wheelbase	m2(mm)	75
4.33	Aisle width for pallets 1000×1200 crossways	Ast(mm)	2770
4.34	Aisle width for pallets 800×1200 lengthways	Ast(mm)	2820
4.35	Turning radius	Wa(mm)	1650
4.37	Length across support arms	l7(mm)	1780
Performance Data			
5.1	Travel speed,laden/unladen	km/h	10.5/10.5
5.2	Lift speed,laden/unladen	m/s	0.4/ 0.5
5.3	lowering speed,laden/unladen	m/s	0.45/0.45
5.4	Reach speed, with/without load	m/s	0.1/0.1
5.8	Max. gradeability, with/without load	%	10/15
5.10	Service brake		Hydraulic/electric
E-Motor			
6.1	Drive motor rating S2 60 min	kW	6.4/7
6.2	Lift motor rating at S3 15%	kW	12.5
6.4	Battery voltage,nominal capacity K5	V/Ah	48/350
6.5	Battery weight	kg	250
Other Details			
8.1	Type of drive control		AC
8.4	Sound level at driver's ear according to EN 12 053	dB(A)	68

Mast Table (VDI2198)

Lift	h3	4500	5000	5500	6000	6500	7000	7500	8000
Height of mast, lowered	h1	2235	2400	2568	2735	2900	3068	3234	3400
Height of mast, extended	h4	5410	5910	6410	6910	7410	7910	8410	8910
Free lift	h2	1563	1730	1897	2063	2230	2397	2563	2730

Lift	h3	8500	9000	9500
Height of mast, lowered	h1	3567	3734	3900
Height of mast, extended	h4	9410	9910	10410
Free lift	h2	2897	3063	3230

Give priority	h3	4500	5500	6500
---------------	----	------	------	------



PTE15Q2-A

Walkie Pallet Truck

 Li-ion series



Smart Design



CAN-bus



Best
Cost-performance
Ratio



1500kg

Light Weight



Small Size



Low
Service-weight



Lithium Battery

ATOM

NEW / *Noblelift Products*
ARRIVAL

PTE15Q2-A

The newly upgraded ATOM lithium powered pallet truck showcases nimble performance with lighter weight. Providing an ideal solution for material handling in supermarkets, workshop internal logistics, and other occasions.

The battery is equipped with lithium iron phosphate as standard, which can be quickly replaced and used or charged at any time.

The structure of the truck is more compact and more efficient. It provides customers with a new solution that can replace manual and semi-electric products. More importantly, it can greatly reduce the physical damage to the operators caused by the long-term pulling or lifting and lowering operation comparing to the traditional manual products. The light weight of the truck, without sacrificing the strength of frame, is very suitable for places with confined space or limit to truck weight.



Ergonomic & Smart Tiller

- Turtle Speed Button
- Vertical Drive Function
- LEDs for Battery Charge Level
- Fault Code Indication
- Removable Key Switch for access control



BACK



FRONT

Emergency-reverse & Horn Buttons

Electric Lifting and Lowering

The tiller integrates multiple functions and is easy to operate. The standard power display and fault display make the status of truck clear at a glance, and also make management of truck much safer. All ergonomic switches and buttons are designed in the best accessible position for convenient operation.



The ATOM can turn safely in narrow spaces.

PS16N

The range of stacker includes the wide list of models with capacity from 1200kg to 2000kg and lifting height up to 5500mm.

INTRODUCTION

The truck designed to be used with high efficiency even during their multi-shift operation. The configuration of the truck allows you to get more powerful and productive units thanks to its increased speed and different options of batteries, including Lithium solutions.

ADVANTAGES:

- The new model range of short-tiller trucks introduced by Noblelift has combined all the experience gained by the manufacturer over past years. By using of the most advanced solutions and top level components, the new range is ready to provide the top level of performance to its users.
- During the design stage, several priorities and various details were considered and verified such as improvement of the service life and performance of our trucks, easy maintenance as well as confirmation of interchangeability of components not only within model range, but also with other ranges of Noblelift products.
- The experience of Noblelift shows that the use of top brand components from well-known suppliers not only helps to improve reliability, but also gain trust from our customers and put the products to a new level. That is why nearly all key components used for the model range are coming from famous brands with rich experience in material handling industry.





Powerful AC-drive unit from the global industry leaders: the AC driving motor designed and produced by Schabmuller comes together with the top quality ZF gearbox and it is equipped with Intorq electromagnetic brake. The drive unit can provide the drive speed up to 8 km/h. The use of top level quality drive wheels from German manufacturers Rader Vogel or Wicke helps to ensure the long life time of PU tires.



The integrated design of operator's platform and protective arms as well as totally new internal structure allows to ensure the smallest body length of the stackers and provide extremely low turning radius among competitors. Together with this, the suspension system for the platform helps to provide the high level of comfort to operators.



The use of apron with 8 mm thickness allows to ensure the robustness of chassis and its strength even in case of collision against objects. The strong battery cover made out of steel helps to provide a high level of strength for this part.



Rema tiller delivers high level of ergonomics as well as reliability of control system. In addition, the tiller ensures a long life-time thanks to the contactless rocker switches designed for lifting/lowering function.



The driving controllers and steering controllers are manufactured by Zapi (Italy) - the leading European brand with long history in the industry, which provides extremely reliable and flexible solutions with high performance level of the control system.



The option of PIN-code panel access, which works not only with PIN-code but also with access cards (RFID), can significantly simplify the procedure of access limitation for the fleet which may be used by more than one operator.



The model range can be equipped with the option of Electric Power Steering (EPS) which delivers precise and fast control for the position of steering wheel and has a high level of reliability as well as safety according to official standards.



PS16N

Mast table 16N

Designation	Lowered mast height h1(mm)	Free lift height h2(mm)	Lift height h3(mm)	Extended mast height h4(mm)
PS16N				
Two stage mast	1958	/	2810	3380
	2108	/	3110	3680
	2308	/	3510	4080
Two stage mast FFL (Full-Free-Lift)	1958	1410	2810	3380
	2108	1560	3110	3680
	2308	1760	3510	4080
Three stage mast	2008	/	4210	4780
	2108	/	4510	5080
Three stage mast FFL (Full-Free-Lift)	1908	1320	3910	4480
	2008	1420	4210	4780
	2108	1520	4510	5080
	2343	1756	5230	5780



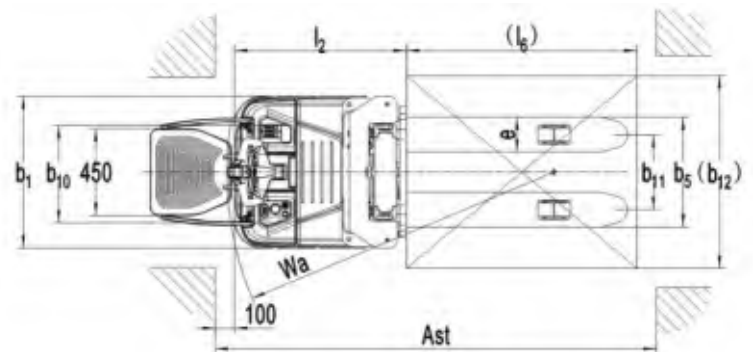
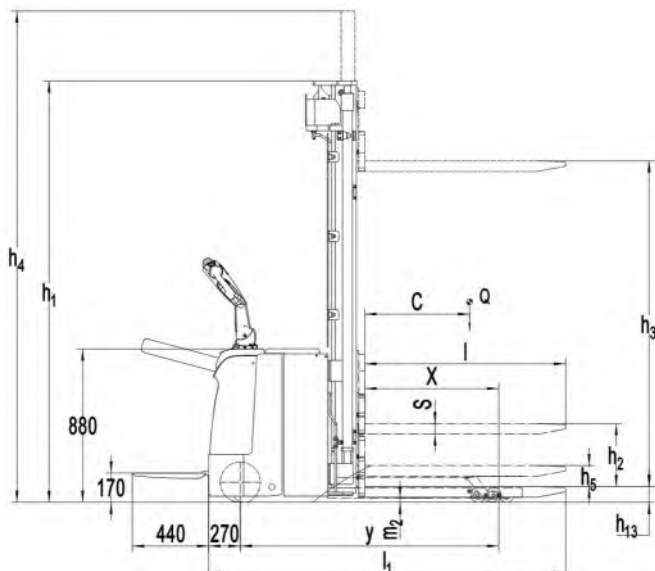
The option of side battery replacement allows customers to use the truck with multi-shift operation and not to waste time on complicated procedure of battery replacement through the top. With help of specially designed trolley, the batteries can be replaced fast and effortlessly.



The trucks can be equipped with the option of Aquamatic- the system of fast refilling of distilled water in lead-acid batteries. The 2-ton pallet truck can be optionally equipped with the battery under 3VBS standard, which helps to reduce the length of the original truck and make it more compact (the standard battery is 2PzS).



The model range can be equipped with Lithium batteries. The use of lithium solution from Noblelift will allow you to enjoy benefits of Lithium technology such as Fast charging, Opportunity charging, Maintenance free, Environmental-friendly, Smart Diagnosis of battery status, Lower cost of Total Ownership with long service life.



Type sheet for industrial truck acc. to VDI 2198

1KG=2.2LB 1INCH=25.4MM

Identification

1.2	Manufacturer's type designation		PS16N(5500)
1.3	Drive		Battery
1.4	Operator type		Pedestrian
1.5	Load Capacity / rated load	Q (t)	1.6
1.6	Load centre distance	c (mm)	600
1.8	Load distance ,centre of drive axle to fork	x (mm)	647
1.9	Wheelbase	y (mm)	1215

Weights

2.1	Service weight	kg	1380
2.2	Axle load at full load, drive side/load side	kg	1040/1940
2.3	Axle load at no load, drive side/load side	kg	940/440

Wheels, Chassis

3.1	Tires		Polyurethane(PU)
3.2	Tire size,front	Øx w (mm)	Ø230×70
3.3	Tire size,rear	Øx w (mm)	Ø84×70
3.4	Additional wheels(dimensions)	Øx w (mm)	Ø150×54
3.5	Wheels,number front/rear(x=driven wheels)		1x + 1 / 4
3.6	Tread, front	b10 (mm)	510
3.7	Tread, rear	b11 (mm)	390/505

Basic Dimensions

4.2	Lowered mast height	h1(mm)	2408
4.3	Free Lift height	h2(mm)	1820
4.4	Lift	h3(mm)	5410
4.5	Extended maximal height	h4(mm)	6110
4.9	Height of tiller in drive position min./ max.	h14 (mm)	950/1350
4.15	Height, lowered	h13 (mm)	90
4.19	Overall length	l1 (mm)	1896 ¹⁾
4.20	Length to face of forks	l2 (mm)	746 ¹⁾
4.21	Overall width	b1 (mm)	790
4.22	Fork dimensions	s/e/l (mm)	60 / 180 / 1150
4.25	Width across forks	b5 (mm)	570 /685
4.32	Ground clearance, centre of wheelbase	m2 (mm)	28
4.33	Aisle width for pallets1000X1200 crossways	Ast (mm)	2325 ¹⁾
4.34	Aisle width for pallets800X1200 lengthways	Ast (mm)	2290 ¹⁾
4.35	Turning radius	Wa (mm)	1420 ¹⁾

Performance Data

5.1	Travel speed, laden/ unladen	km/h	6.0/7.0
5.2	Lift speed, laden/ unladen	m/s	0.13/0.20
5.3	Lowering speed, laden/ unladen	m/s	0.28/0.23
5.8	Max. gradeability, laden/ unladen	%	6/12
5.10	Service brake		Electromagnetic

E-Motor

6.1	Drive motor rating S2 60min	kW	1.4
6.2	Lift motor rating at S3 10%	kW	3.2
6.3	Battery acc. to DIN 43531/ 35/ 36 A, B, C, no		3VBS
6.4	Battery voltage, nominal capacity K5	V / Ah	240/210-270
6.5	Battery weight	kg	185
6.6	Energy consumption acc. to VDI cycle	kWh/h	1.34

Other Details

8.1	Type of drive control		AC- speed control
8.4	Sound level at driver's ear acc. to EN 12053	dB(A)	<69

1) with compact platform:+440mm

AC 25

TOP QUALITY PALLET TRUCK

- Top class range of pallet trucks with excellent designs
- Professional and ideal storage aid for all variety of manual transport tasks over short distances in stores and warehouse as well as factory plants.
- Reliable, sturdy, torsion-resistant due to its extremely strong high quality steel profile Germany standard WAGNER painting system ensures best powder coating and painting quality.
- All pivots points are greased ensures excellent maneuverability with effortless steering The chromed bearing bushes and joints ensure quiet running properties and particularly long service life.

Hand pallet truck		1KG=2.2LB 1INCH=25.4MM					
Item/Type		AC20		AC25		AC30	
Capacity Q	kg	2000		2500		3000	
Min. fork height h	mm	85	75	85	75	85	75
Max. fork height h ₁	mm	200	190	200	190	200	190
Steering wheel	mm	Ø200x50	Ø180x50	Ø200x50	Ø180x50	Ø200x50	Ø180x50
Load roller Single	mm	Ø80x93	Ø74x93	Ø80x93	Ø74x93	Ø80x93	Ø74x93
Load roller Tandem	mm	Ø80x70	Ø74x70	Ø80x70	Ø74x70	Ø80x70	Ø74x70
Size of fork e*s	mm	160x50				160x60	
Width overall forks B	mm	450/520/540/685					
Fork length l	mm	800/900/1000/1100/1150/1220					

Conforms to EN 1757-2



Tandem fork rollers
-----Ideal for heavy loads and uneven floors.



- Option of single and tandem fork rollers
- Additional entry and exit fork rollers guarantees for maximum stability and safety for transporting goods on slopes.

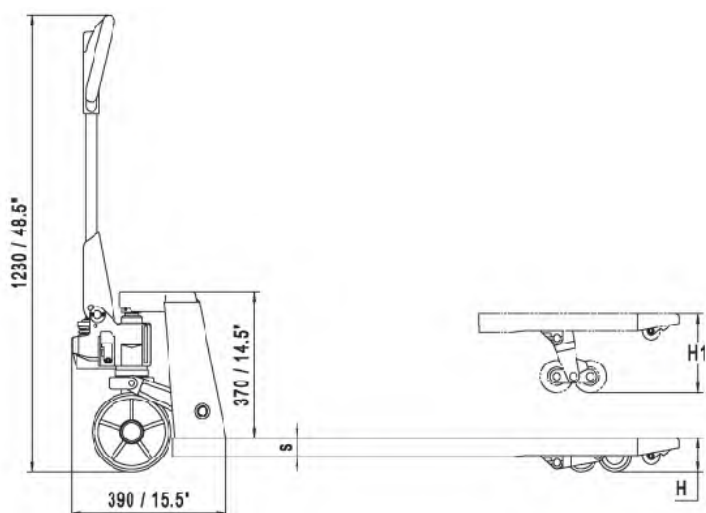
- Ergonomically designed handle with comfortable rubber grip allows the optimized safety as well as comfortable. Three position operational handle lever for lifting, transporting and lowering purposes
- Lower Position—to lower load, pull up on the finger tip control
- Neutral Position—to place finger tip control in this position during pulling the truck or load
- Lift Position—to raise load, push down on finger tip control, pump handle to raise the load



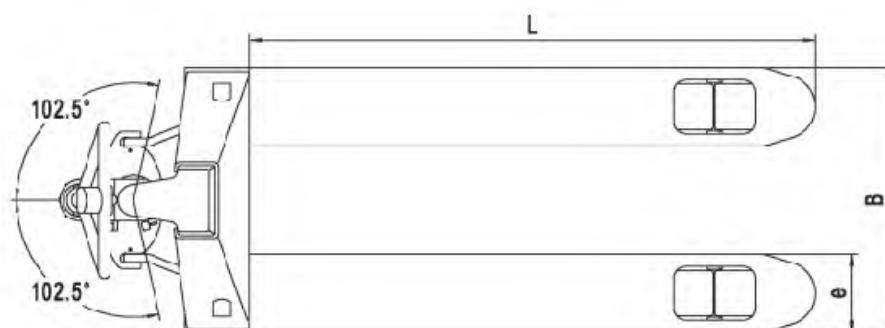
- Excellent galvanized whole casting hydraulic pump, robust and durable, with fine control of lowering speed and overload valve, low routine maintenance.



- Option of different coating material for both steering wheel and fork rollers
- Polyurethane—Ideal for delicate floors with hard wearing and non-marking property, quiet and durable
- Nylon—low drag efforts, high resistance to chemicals, non-marking, preferred in food, fishing and chemical industries with smooth level floors.
- Rubber—Best choice for quiet and durable demands, ideal for smooth and rough floors.



Hand Pallet Truck





NR530

RIDE-ON SCRUBBER



Robust
design



High
performance



Easy
maintenance

Industries



Scenarios



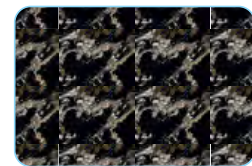
Epoxy Flooring



Wear-Resisting Flooring



Tile Flooring



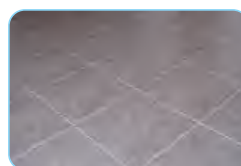
Marble Flooring



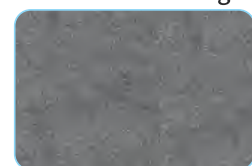
PVC



Terrazzo Flooring



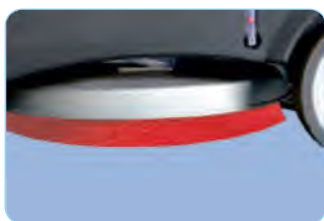
Small Square Brick Flooring



Lime Flooring

The recommended application of brush/ needle disc for fixing pad:

	Brush			Needle disc+pad		
	Soft brush	Nylon (Standard)	Hard brush	White	Red	Black
Concrete floor		Applicable	Applicable		Applicable	Applicable
Terrazzo floor		Applicable	Applicable		Applicable	Applicable
Tile/ Slate floor	Applicable	Applicable			Applicable	
Marble floor	Applicable	Applicable		Applicable	Applicable	
Plastic floor	Applicable			Applicable	Applicable	
Rubber floor	Applicable			Applicable		



Notes:

1. Soft brush: for cleaning and polishing smooth surface
2. Nylon brush: for general floor cleaning (standard configuration)
3. Hard brush: for removing stubborn dirt on hard ground
4. Needle disc: holding the pad, reducing the wear on the floor; the pad is used together with the needle disc. According to different conditions of the floor, we need to choose different pads in different colors (generally the deeper the color is, the greater the friction on the floor).

Specific application of pads:

- a) White pad: for general cleaning and polishing, marble and smooth floors
- b) Red pad: for general floor cleaning
- c) Black pad: for removing stubborn stains on hard floors

The application of squeezer rubber strip:

	Rubber (Standard)	(PU)
Concrete floor	Applicable	Applicable
Terrazzo floor	Applicable	Applicable
Tile/ Slate floor	Applicable	
Marble floor	Applicable	
Plastic floor	Applicable	Applicable
Rubber floor	Applicable	Applicable



Note:

Polyurethane (PU) strip has strong wear resistance and oil resistance, which is suitable for oil floor conditions, but cutting and tearing performance of PU strip is poor, so it is not suitable for quadrel/ brick or tile floors.



NR530

Ride-on Scrubber



NB530

WALK-BEHIND SCRUBBER



Robust design



High performance



Easy maintenance

NB530

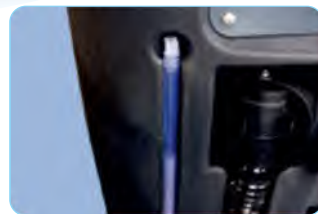
Walk-behind Scrubber

Application

NB530 Walk-behind Scrubber is a brand new self-designed walk-behind scrubber that is suitable for small-and medium-sized places with large flow of people but many small and congested areas, like shopping malls, office buildings, stations, hotels, hospitals, etc. The scrubber delivers superior cleaning results in the compact, flexible and navigating-around-obstacles design.

Features and Advantages

- A large opening on the recovery tank with detachable cap top cover provides perfect and easy access for cleaning and maintenance.
- Reliable and simple Multi-touch control panel with low maintenance cost.
- Big solution tank with filler point located at the front of the scrubber makes the water refilling fast and easy.
- The brush cover and squeegee processed by aluminum die-casting with further spraying are robust, durable and well protected against rust.
- The down pressure from the brush to the ground is designed to be adjustable, which offers versatile and flexible use to cover different floor cleaning requirements and is effective in more applications.
- Efficient mechanical noise reduction system effectively reduces equipment noise during work.
- Efficient and reliable mechanical defoaming and solution tank water-level alarm mechanism greatly improve the service life of the vacuum motor.
- One-button-start design of the motor, digital over-current and under-voltage protection integrated on the controller.
- Patented brush buckle design with longer service life can automatically load and unload the brush.



NB530 Walk-behind Scrubber—Specifications

Model		NB 530	
TECHNICAL DATA	Cleaning Path (brush diameter)	(mm)	530
	Squeegee Width	(mm)	760
	Solution tank capacity	(L)	50
	Recovery tank capacity	(L)	50
	Clean productivity	(m ² /h)	1800
	Continuous working time	(h)	3~4
	Brush motor rated power	(W)	550
	Vacuum motor rated power	(W)	400
	Drive motor rated power	(W)	-
	Traveling speed	(km/h)	-
	Sound level dB	(A)	65±3
	Battery		24V (2x12V100Ah)
	Net weight (without batteries)	(kg)	89
	Product dimensions (LxWxH)	(mm)	1220x540x1050

Industries



Scenarios



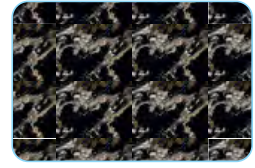
Epoxy Flooring



Wear-Resisting Flooring



Tile Flooring



Marble Flooring



PVC



Terrazzo Flooring



Small Square Brick Flooring



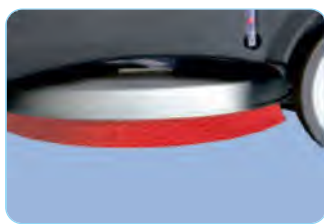
Lime Flooring

The recommended application of brush/ needle disc for fixing pad:

	Brush			Needle disc+pad		
	Soft brush	Nylon (Standard)	Hard brush	White	Red	Black
Concrete floor		Applicable	Applicable		Applicable	Applicable
Terrazzo floor		Applicable	Applicable		Applicable	Applicable
Tile/ Slate floor	Applicable	Applicable			Applicable	
Marble floor	Applicable	Applicable		Applicable	Applicable	
Plastic floor	Applicable			Applicable	Applicable	
Rubber floor	Applicable			Applicable		

The application of squeezer rubber strip:

	Rubber (Standard)	(PU)
Concrete floor	Applicable	Applicable
Terrazzo floor	Applicable	Applicable
Tile/ Slate floor	Applicable	
Marble floor	Applicable	
Plastic floor	Applicable	Applicable
Rubber floor	Applicable	Applicable



Notes:

1. Soft brush: for cleaning and polishing smooth surface
2. Nylon brush: for general floor cleaning (standard configuration)
3. Hard brush: for removing stubborn dirt on hard ground
4. Needle disc: holding the pad, reducing the wear on the floor; the pad is used together with the needle disc. According to different conditions of the floor, we need to choose different pads in different colors (generally the deeper the color is, the greater the friction on the floor).

Note:

Polyurethane (PU) strip has strong wear resistance and oil resistance, which is suitable for oil floor conditions, but cutting and tearing performance of PU strip is poor, so it is not suitable for quadrel/ brick or tile floors.

Specific application of pads:

- a) White pad: for general cleaning and polishing, marble and smooth floors
- b) Red pad: for general floor cleaning
- c) Black pad: for removing stubborn stains on hard floors

A man wearing glasses and a dark jacket with orange accents is operating a walk-behind floor scrubber. The scrubber is primarily black with a bright orange top section. It has a large, circular, rotating brush at the bottom. The setting is a clean, modern office hallway with light-colored walls, a glass partition wall with a world map graphic, and a grey floor. A potted plant is visible in the background.

NB530

Walk-behind Scrubber

The New Scrubmaster

NB 380

Walk Behind Scrubber

NEW ARRIVAL



The buckle type brush is replaced with simple and convenient.
The fork skirt brush designed to prevent the brush of the brushing out of water, the V-type squeegee design to avoid sewage overflow.



Integrated water proof touch panel design, easy and fast operation



Low energy controll system, one full charge can keep machine running 1.5~2 hrs with standard 24V32AH lead-acid battery.



Foldable handle design for less storage space.

▶ NB380 FEATURES AND ADVANTAGES:

- NB380 is a mini-size walk-behind scrubber machine, equipped with a brushless brush motor and vacuum motor, low noise, high efficiency, energy saving, longer lifetime, and low maintenance cost.
- Compact size with washing width 380mm, easy to work in narrow areas.
- Low energy consumption control system, one full charge can keep the machine running 1.5~2 hours with standard 24V32AH lead-acid battery.
- Intelligent waterproof control panel, one button start, water volume can be adjusted, user-friendly design for easy operation.
- Products can be used in warehouses, shopping malls, workshops and other places, with a wide range of application scenarios.
- Aluminium die-casting squeegee frame, good rust prevention and the best water suction performance.
- Water skirt effectively prevents sewage splashing and controls clean areas.
- Clean water tank separation, cleaning and maintenance are more convenient.
- Tool-free disassembly design for the whole squeegee system, easy to change the squeegee blade. Foldable handle design for less storage space.



▶ THE BASIS FOR CLEANLINESS:

The new **NOBLELIFT NB380** combines high performance with ease of use in a compact design. With a working width of 380mm, floors can be cleaned quickly, efficiently and thoroughly with a disc brush or pad. Many well-thought-out details support the user in his daily work. For example, the ergonomically shaped, the good accessibility of all components facilitating daily maintenance or the cover of the solution tank filler neck, which acts as a dosing aid for cleaning chemicals.



Clean water tank separation,
cleaning and maintenance more
convenient

NB 380 WALK-BEHIND SCRUBER SPECIFICATIONS

MODEL		NB 380			
TECHNICAL DATA	Rated power	W	Hp	530	0.71
	Brush motor rated power	W	Hp	380	0.51
	Vacuum motor rated power	W	Hp	150	0.2
	Vacuum capacity	kPa	kPa	>10	>10
	Voltage (DC)	V	V	24	24
	Sound pressure level	dB	dB	65±3	65±3
	Dimensions (L*W*H)	mm	in	700*430*1200	28*17*47
	Brush speed	RPM	RPM	180	180
	Solution/recovery tank capacity	L	gal	10L/10L	2.6/2.6
	Cleaning path	mm	in	380	15
	Clean productivity	m ² /h	yd ² /h	1140	1363
	Brush/pad diameter	mm	in	380/380	15/15
	Continuous working time (12V32AH*2)	h	h	1.5-2	1.5-2
	Battery compartment size (L*W*H)	(mm)	(in)	290*185*190	11.4*7.3*7.5
	Gross weight (with batteries, empty tank)	kg	lbs	58.5	58.5
Brush disk quantity			1 Disc	129	

**ITS NEVER TO
EARLY FOR
SUSTAINABILITY**





ENDÜSTRİYEL TEMİZLİK, KİMYASAL VE EKİPMANLARI

- Temizlik Malzemeleri
- Kağıt Grubu
- Çöp Poşetleri
- Baskılı Peçeteler
- Kat Arabaları
- Buklet Malzemeleri
- Kişisel Hijyen / Dezenfektan



SOLAR ENERJİ SİSTEMLERİ

- İnverterler
- Solar Paneller
- Lityum İyon aküler
- Solar Enerji Montaj Malzemeleri
- Alüminyum Üçgen Ayaklar
- Profiller
- Kiremit Çatı Aparatları



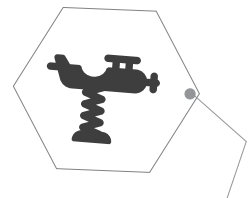
JAKUZİ

- Ev Tipi Jakuzi
- Tesis Tipi Jakuzi
- Dış Alan & Bahçe Jakuzi



SPA

- Dış Alan Sauna
- İç Alan Sauna
- Buhar Odaları
- Buhar Jeneratörü
- Sauna Taşı
- Sauna Sobası
- Hamam



OYUN PARKI VE BAHÇE

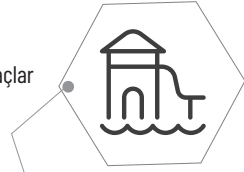
- Çocuk Oyun Parkları
- Açık Alan Fitness Aletleri
- Zemin Kaplama
- Bahçe Ekipmanları



SİBA E-MOTION

ARAÇ GRUBU

- Dongfeng Elektrikli Salon Araçlar Servis, Bakım ve Yedek Parçaları
- Kama Elektrikli Hafif ve Ağır Ticari Araçlar Servis, Bakım ve Yedek Parçaları
- Helmarv Elektrikli Ticari Van Araçlar Servis, Bakım ve Yedek Parçaları
- Ridarra Elektrikli Pickup Araçlar Servis, Bakım ve Yedek Parçaları
- Noble Lift Yükleme Makineleri Servis, Bakım ve Yedek Parçaları



AQUA PARK KURULUMU

- Tünel Kaydıraklar
- Vücut Kaydırakları
- Kamikaze Kaydıraklar
- Çoklu Kaydıraklar
- Çocuk Sulu Oyun Grupları
- Fil Kaydırakları



SİGORTA HİZMETLERİ

- Araç Sigortası
- Konut Sigortası
- İş Yeri Sigortası
- Seyahat Sigortası
- Sağlık Sigortası
- Nakliyat Emtea Sigortası
- Ferdi Kaza Sigortası
- Asansör Sigortası
- Mesleki Sorumluluk Sigortası
- İnşaat All Risk Sigortası



KLİMA & ISI POMPASI

- Duvar Tipi Split Klima
- Salon Tip Klimalar
- Multi Klima Sistemleri
- VRF Klima Sistemleri
- Ticari Tip 1e1 Klima Sistemleri
- Bakır Boru Altyapı İşleri

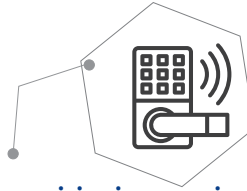
SİBA

Kalite ve Güven...



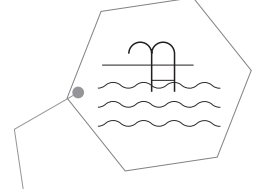
SU ARITMA SİSTEMLERİ

- İçme Suyu Arıtma Sistemleri
- Atık Suyu Arıtma Sistemleri
- Su Yumuşatma Sistemleri
- Tezgah Altı Arıtma Sistemleri
- Su Şartlandırma Sistemleri



AKILLI KİLİT SİSTEMLERİ

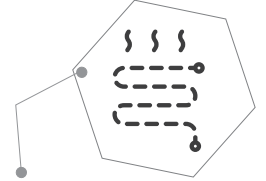
- Konut Tipi Giriş ve Oda Kapı Kilitleri
- Ofis Tipi Giriş ve Oda Kapı Kilitleri
- İşyeri, Dükkan, Mağaza, Depo Tipi Kapı Kilitleri
- Otel Odası Kapı Kilitli Sistemleri
- WIFI GATEWAY
- GATEWAY G2



SİBA HAVUZ

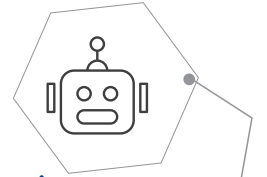
HAVUZ YAPIMI, KİMYASALLARI VE EKİPMANLARI

- Tuz Klorinatörü
- Kimyasallar
- Temizlik Ekipmanları
- Teknik Malzemeleri
- Dış Ekipmanlar
- Naturel Havuzlar (Bio Design)
- Fiber Havuzlar
- Havuz Mekanik Teknik Kurulumu
- Havuz Isıtma Sistemleri



ISI POMPASI

- Yerden Isıtma Sistemleri
- Fan-Coil ile Isıtma Soğutma Sistemleri
- Radyatör Sistemleri



MAKİNE GRUBU

- Nilfisk Makine e Yedek Parçaları
- Akü
- Rottest basınçlı Yıkama Makinesi ve Yedek Parçaları
- Viper ve Comac Binicili Yer Yıkama Makineleri ve Yedek Parçaları

Merkez Ofis
Karaoğlanoğlu Caddesi No.285, Karaoğlanoğlu - Girne / KKTC
Tel: +90 392 822 40 69 - +90 548 826 40 40

Merkez Showroom (Jakuzi)
Karaoğlanoğlu Cad. Paradise Court D.1, D.2 , D.3, Karaoğlanoğlu - Girne / KKTC
Tel: +90 533 883 58 58

Girne Şube
Yağmur Sok. Ersoy Plaza No:4-5 Bellapais Kavşağı Yanı - Girne / KKTC
Tel: +90 392 815 47 28 - +90 533 886 76 86

Erülkü Şube
Erülkü Süpermarket - Minareliköy / KKTC
Tel: +90 548 811 40 40

Mağusa Şube
Hasan Barboçelli Sokak, Sakarya Bölgesi, Corner Park Apt. Dükkan 1, Gazimağusa / KKTC
Tel: +90 533 832 44 64

Lefkoşa Şube
Osman Örek Caddesi, Yapım İnşaat Merkez Bina, Zemin Kat - Lefkoşa / KKTC
Tel: +90 548 853 80 80

Siparişlerinizi;

 www.sibastore.com

adresinden verebilirsiniz!

www.sibaltd.com

444 74 22